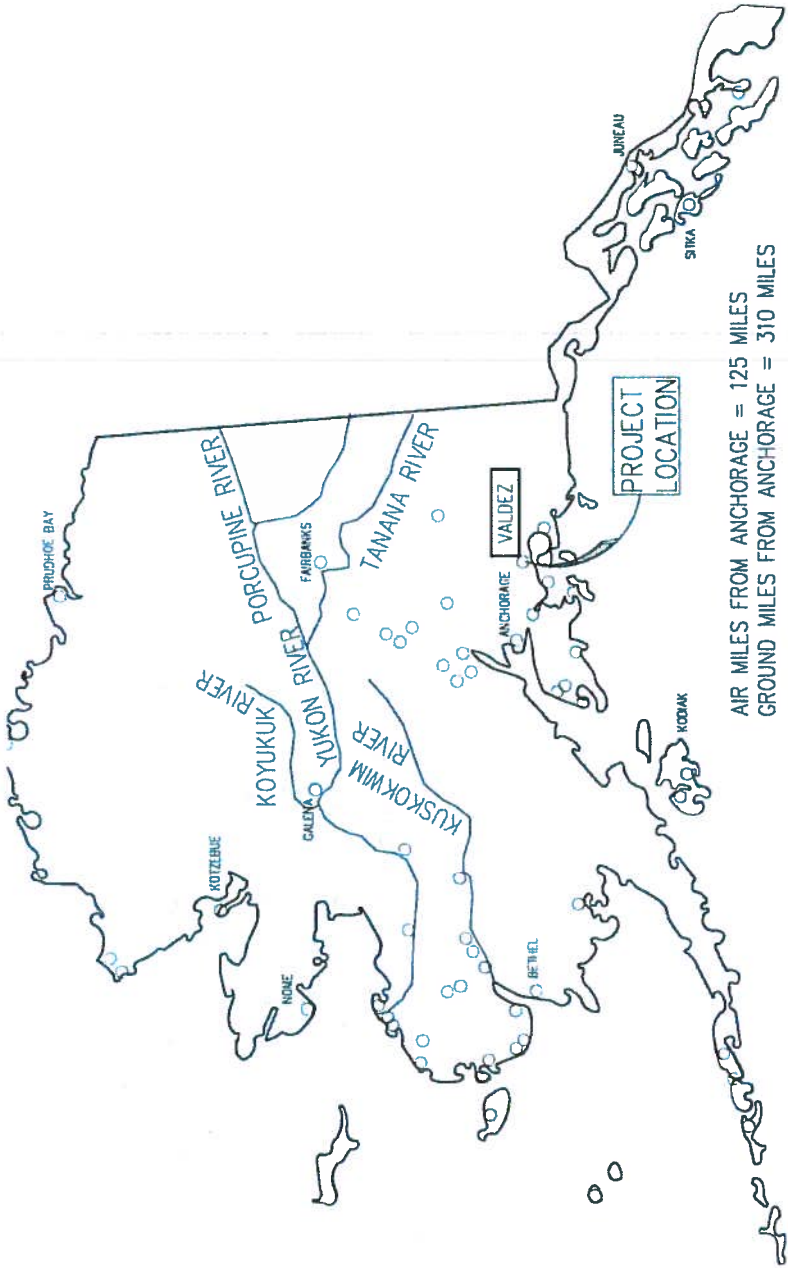


APPENDIX A

DRAWINGS

Medical Campus Expansion (MRI) – Request for Proposals



Medical Campus Expansion (MRI) – Request for Proposals

Page 1 of 1

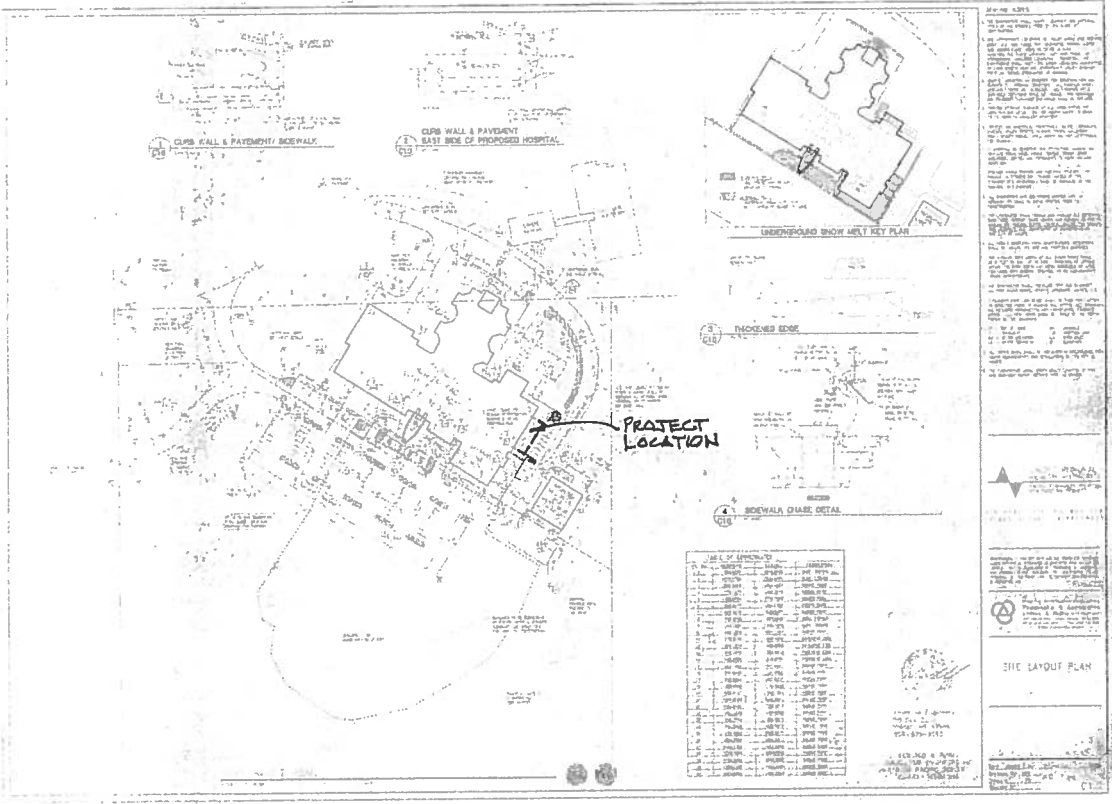
To see all the details that are visible on the screen, use the "Full" button at the top.



valdez medical center - Google Maps

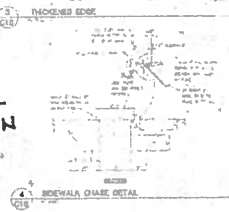
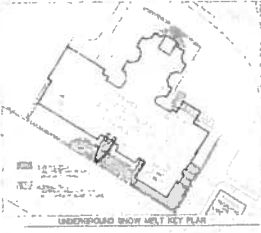
7/2/2013

<https://maps.google.com/maps?hl=en>



CLUB WALL & PAVEMENT SIDEWALK

CLUB WALL & PAVEMENT BASE SIDE OF PROPOSED HOSPITAL

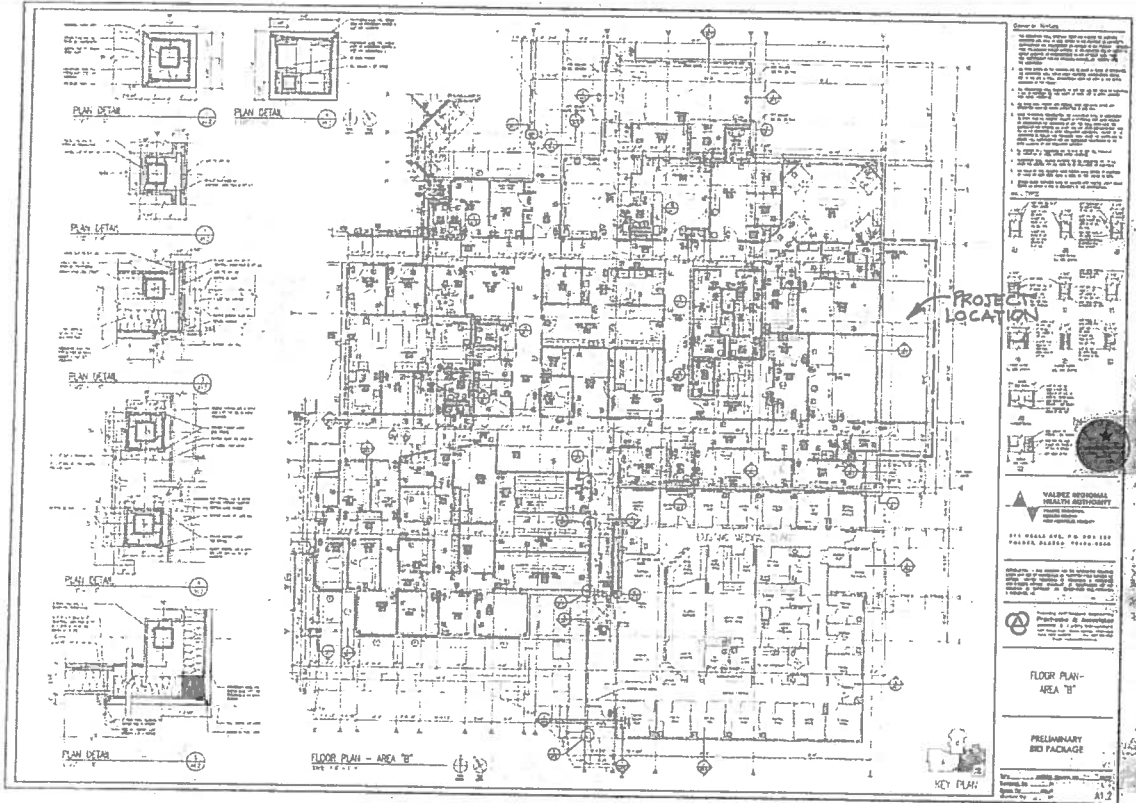


PROJECT LOCATION

TABLE OF SPECIFICATIONS

1.00	CONCRETE	3000 PSI	ASTM C 1097
1.01	CONCRETE	3500 PSI	ASTM C 1097
1.02	CONCRETE	4000 PSI	ASTM C 1097
1.03	CONCRETE	4500 PSI	ASTM C 1097
1.04	CONCRETE	5000 PSI	ASTM C 1097
1.05	CONCRETE	5500 PSI	ASTM C 1097
1.06	CONCRETE	6000 PSI	ASTM C 1097
1.07	CONCRETE	6500 PSI	ASTM C 1097
1.08	CONCRETE	7000 PSI	ASTM C 1097
1.09	CONCRETE	7500 PSI	ASTM C 1097
1.10	CONCRETE	8000 PSI	ASTM C 1097
1.11	CONCRETE	8500 PSI	ASTM C 1097
1.12	CONCRETE	9000 PSI	ASTM C 1097
1.13	CONCRETE	9500 PSI	ASTM C 1097
1.14	CONCRETE	10000 PSI	ASTM C 1097
1.15	CONCRETE	10500 PSI	ASTM C 1097
1.16	CONCRETE	11000 PSI	ASTM C 1097
1.17	CONCRETE	11500 PSI	ASTM C 1097
1.18	CONCRETE	12000 PSI	ASTM C 1097
1.19	CONCRETE	12500 PSI	ASTM C 1097
1.20	CONCRETE	13000 PSI	ASTM C 1097
1.21	CONCRETE	13500 PSI	ASTM C 1097
1.22	CONCRETE	14000 PSI	ASTM C 1097
1.23	CONCRETE	14500 PSI	ASTM C 1097
1.24	CONCRETE	15000 PSI	ASTM C 1097
1.25	CONCRETE	15500 PSI	ASTM C 1097
1.26	CONCRETE	16000 PSI	ASTM C 1097
1.27	CONCRETE	16500 PSI	ASTM C 1097
1.28	CONCRETE	17000 PSI	ASTM C 1097
1.29	CONCRETE	17500 PSI	ASTM C 1097
1.30	CONCRETE	18000 PSI	ASTM C 1097
1.31	CONCRETE	18500 PSI	ASTM C 1097
1.32	CONCRETE	19000 PSI	ASTM C 1097
1.33	CONCRETE	19500 PSI	ASTM C 1097
1.34	CONCRETE	20000 PSI	ASTM C 1097
1.35	CONCRETE	20500 PSI	ASTM C 1097
1.36	CONCRETE	21000 PSI	ASTM C 1097
1.37	CONCRETE	21500 PSI	ASTM C 1097
1.38	CONCRETE	22000 PSI	ASTM C 1097
1.39	CONCRETE	22500 PSI	ASTM C 1097
1.40	CONCRETE	23000 PSI	ASTM C 1097
1.41	CONCRETE	23500 PSI	ASTM C 1097
1.42	CONCRETE	24000 PSI	ASTM C 1097
1.43	CONCRETE	24500 PSI	ASTM C 1097
1.44	CONCRETE	25000 PSI	ASTM C 1097
1.45	CONCRETE	25500 PSI	ASTM C 1097
1.46	CONCRETE	26000 PSI	ASTM C 1097
1.47	CONCRETE	26500 PSI	ASTM C 1097
1.48	CONCRETE	27000 PSI	ASTM C 1097
1.49	CONCRETE	27500 PSI	ASTM C 1097
1.50	CONCRETE	28000 PSI	ASTM C 1097
1.51	CONCRETE	28500 PSI	ASTM C 1097
1.52	CONCRETE	29000 PSI	ASTM C 1097
1.53	CONCRETE	29500 PSI	ASTM C 1097
1.54	CONCRETE	30000 PSI	ASTM C 1097
1.55	CONCRETE	30500 PSI	ASTM C 1097
1.56	CONCRETE	31000 PSI	ASTM C 1097
1.57	CONCRETE	31500 PSI	ASTM C 1097
1.58	CONCRETE	32000 PSI	ASTM C 1097
1.59	CONCRETE	32500 PSI	ASTM C 1097
1.60	CONCRETE	33000 PSI	ASTM C 1097
1.61	CONCRETE	33500 PSI	ASTM C 1097
1.62	CONCRETE	34000 PSI	ASTM C 1097
1.63	CONCRETE	34500 PSI	ASTM C 1097
1.64	CONCRETE	35000 PSI	ASTM C 1097
1.65	CONCRETE	35500 PSI	ASTM C 1097
1.66	CONCRETE	36000 PSI	ASTM C 1097
1.67	CONCRETE	36500 PSI	ASTM C 1097
1.68	CONCRETE	37000 PSI	ASTM C 1097
1.69	CONCRETE	37500 PSI	ASTM C 1097
1.70	CONCRETE	38000 PSI	ASTM C 1097
1.71	CONCRETE	38500 PSI	ASTM C 1097
1.72	CONCRETE	39000 PSI	ASTM C 1097
1.73	CONCRETE	39500 PSI	ASTM C 1097
1.74	CONCRETE	40000 PSI	ASTM C 1097
1.75	CONCRETE	40500 PSI	ASTM C 1097
1.76	CONCRETE	41000 PSI	ASTM C 1097
1.77	CONCRETE	41500 PSI	ASTM C 1097
1.78	CONCRETE	42000 PSI	ASTM C 1097
1.79	CONCRETE	42500 PSI	ASTM C 1097
1.80	CONCRETE	43000 PSI	ASTM C 1097
1.81	CONCRETE	43500 PSI	ASTM C 1097
1.82	CONCRETE	44000 PSI	ASTM C 1097
1.83	CONCRETE	44500 PSI	ASTM C 1097
1.84	CONCRETE	45000 PSI	ASTM C 1097
1.85	CONCRETE	45500 PSI	ASTM C 1097
1.86	CONCRETE	46000 PSI	ASTM C 1097
1.87	CONCRETE	46500 PSI	ASTM C 1097
1.88	CONCRETE	47000 PSI	ASTM C 1097
1.89	CONCRETE	47500 PSI	ASTM C 1097
1.90	CONCRETE	48000 PSI	ASTM C 1097
1.91	CONCRETE	48500 PSI	ASTM C 1097
1.92	CONCRETE	49000 PSI	ASTM C 1097
1.93	CONCRETE	49500 PSI	ASTM C 1097
1.94	CONCRETE	50000 PSI	ASTM C 1097
1.95	CONCRETE	50500 PSI	ASTM C 1097
1.96	CONCRETE	51000 PSI	ASTM C 1097
1.97	CONCRETE	51500 PSI	ASTM C 1097
1.98	CONCRETE	52000 PSI	ASTM C 1097
1.99	CONCRETE	52500 PSI	ASTM C 1097
2.00	CONCRETE	53000 PSI	ASTM C 1097

DATE: 12/15/2011
 PROJECT: [illegible]
 DRAWING NO: [illegible]
 SHEET NO: [illegible]
 SCALE: [illegible]
 DESIGNER: [illegible]
 CHECKER: [illegible]
 APPROVER: [illegible]
 TITLE: [illegible]



General Notes:

1. ALL WORK SHALL BE IN ACCORDANCE WITH THE SPECIFICATIONS AND CONDITIONS OF CONTRACT.
2. THE CONTRACTOR SHALL BE RESPONSIBLE FOR OBTAINING ALL NECESSARY PERMITS AND APPROVALS.
3. ALL MATERIALS AND WORKMANSHIP SHALL BE SUBJECT TO INSPECTION AND APPROVAL BY THE ARCHITECT.
4. THE CONTRACTOR SHALL MAINTAIN ACCESS TO ALL ADJACENT AREAS AT ALL TIMES.
5. ALL UTILITIES SHALL BE PROTECTED AND MARKED PRIOR TO CONSTRUCTION.
6. THE CONTRACTOR SHALL BE RESPONSIBLE FOR THE PROTECTION OF ALL EXISTING UTILITIES AND STRUCTURES.
7. ALL WORK SHALL BE COMPLETED WITHIN THE SPECIFIED TIME FRAME.
8. THE CONTRACTOR SHALL MAINTAIN A NEAT AND ORDERLY WORK SITE AT ALL TIMES.
9. ALL MATERIALS SHALL BE STORED PROPERLY AND PROTECTED FROM THE ELEMENTS.
10. THE CONTRACTOR SHALL BE RESPONSIBLE FOR THE PROTECTION OF ALL ADJACENT AREAS AND STRUCTURES.
11. ALL WORK SHALL BE COMPLETED WITHIN THE SPECIFIED TIME FRAME.
12. THE CONTRACTOR SHALL MAINTAIN A NEAT AND ORDERLY WORK SITE AT ALL TIMES.
13. ALL MATERIALS SHALL BE STORED PROPERLY AND PROTECTED FROM THE ELEMENTS.
14. THE CONTRACTOR SHALL BE RESPONSIBLE FOR THE PROTECTION OF ALL ADJACENT AREAS AND STRUCTURES.
15. ALL WORK SHALL BE COMPLETED WITHIN THE SPECIFIED TIME FRAME.
16. THE CONTRACTOR SHALL MAINTAIN A NEAT AND ORDERLY WORK SITE AT ALL TIMES.
17. ALL MATERIALS SHALL BE STORED PROPERLY AND PROTECTED FROM THE ELEMENTS.
18. THE CONTRACTOR SHALL BE RESPONSIBLE FOR THE PROTECTION OF ALL ADJACENT AREAS AND STRUCTURES.
19. ALL WORK SHALL BE COMPLETED WITHIN THE SPECIFIED TIME FRAME.
20. THE CONTRACTOR SHALL MAINTAIN A NEAT AND ORDERLY WORK SITE AT ALL TIMES.
21. ALL MATERIALS SHALL BE STORED PROPERLY AND PROTECTED FROM THE ELEMENTS.
22. THE CONTRACTOR SHALL BE RESPONSIBLE FOR THE PROTECTION OF ALL ADJACENT AREAS AND STRUCTURES.
23. ALL WORK SHALL BE COMPLETED WITHIN THE SPECIFIED TIME FRAME.
24. THE CONTRACTOR SHALL MAINTAIN A NEAT AND ORDERLY WORK SITE AT ALL TIMES.
25. ALL MATERIALS SHALL BE STORED PROPERLY AND PROTECTED FROM THE ELEMENTS.
26. THE CONTRACTOR SHALL BE RESPONSIBLE FOR THE PROTECTION OF ALL ADJACENT AREAS AND STRUCTURES.
27. ALL WORK SHALL BE COMPLETED WITHIN THE SPECIFIED TIME FRAME.
28. THE CONTRACTOR SHALL MAINTAIN A NEAT AND ORDERLY WORK SITE AT ALL TIMES.
29. ALL MATERIALS SHALL BE STORED PROPERLY AND PROTECTED FROM THE ELEMENTS.
30. THE CONTRACTOR SHALL BE RESPONSIBLE FOR THE PROTECTION OF ALL ADJACENT AREAS AND STRUCTURES.

VALDIE INTERNATIONAL HEALTH AUTHORITY
 111 BRADLEY AVENUE, SUITE 100
 PITTSBURGH, PENNSYLVANIA 15222-1500
 TEL: 412.326.1000 FAX: 412.326.1001

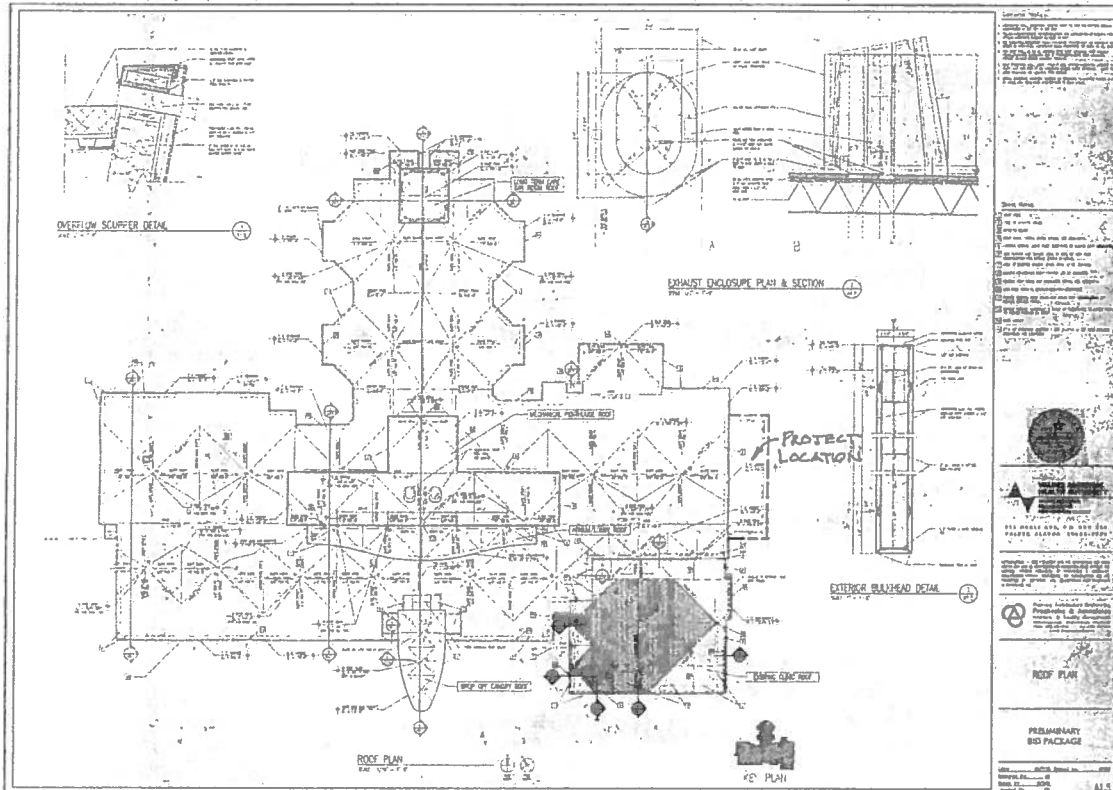
PROTECTIVE LOCATION

FLOOR PLAN - AREA 'B'

PRELIMINARY BID PACKAGE

KEY PLAN

DATE: 11/15/00
 DRAWN BY: [Name]
 CHECKED BY: [Name]
 SCALE: AS SHOWN
 SHEET NO. A1.2



NOTES:

1. ALL ROOF FINISHES SHALL BE AS SHOWN ON THE DRAWINGS.
2. ALL ROOF DRAINS SHALL BE INSTALLED IN ACCORDANCE WITH THE MANUFACTURER'S RECOMMENDATIONS.
3. ALL ROOF CURBS SHALL BE INSTALLED IN ACCORDANCE WITH THE MANUFACTURER'S RECOMMENDATIONS.
4. ALL ROOF STRUCTURE SHALL BE INSTALLED IN ACCORDANCE WITH THE MANUFACTURER'S RECOMMENDATIONS.
5. ALL ROOF STRUCTURE SHALL BE INSTALLED IN ACCORDANCE WITH THE MANUFACTURER'S RECOMMENDATIONS.
6. ALL ROOF STRUCTURE SHALL BE INSTALLED IN ACCORDANCE WITH THE MANUFACTURER'S RECOMMENDATIONS.
7. ALL ROOF STRUCTURE SHALL BE INSTALLED IN ACCORDANCE WITH THE MANUFACTURER'S RECOMMENDATIONS.
8. ALL ROOF STRUCTURE SHALL BE INSTALLED IN ACCORDANCE WITH THE MANUFACTURER'S RECOMMENDATIONS.
9. ALL ROOF STRUCTURE SHALL BE INSTALLED IN ACCORDANCE WITH THE MANUFACTURER'S RECOMMENDATIONS.
10. ALL ROOF STRUCTURE SHALL BE INSTALLED IN ACCORDANCE WITH THE MANUFACTURER'S RECOMMENDATIONS.

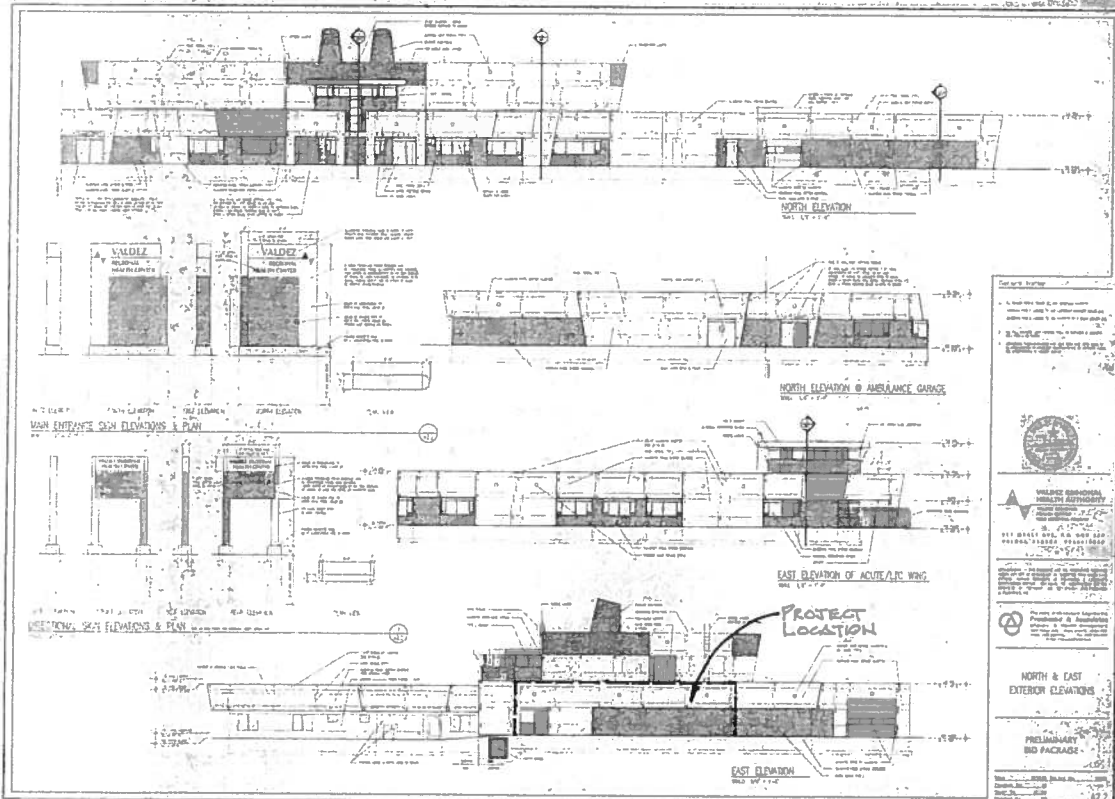
ROOF PLAN

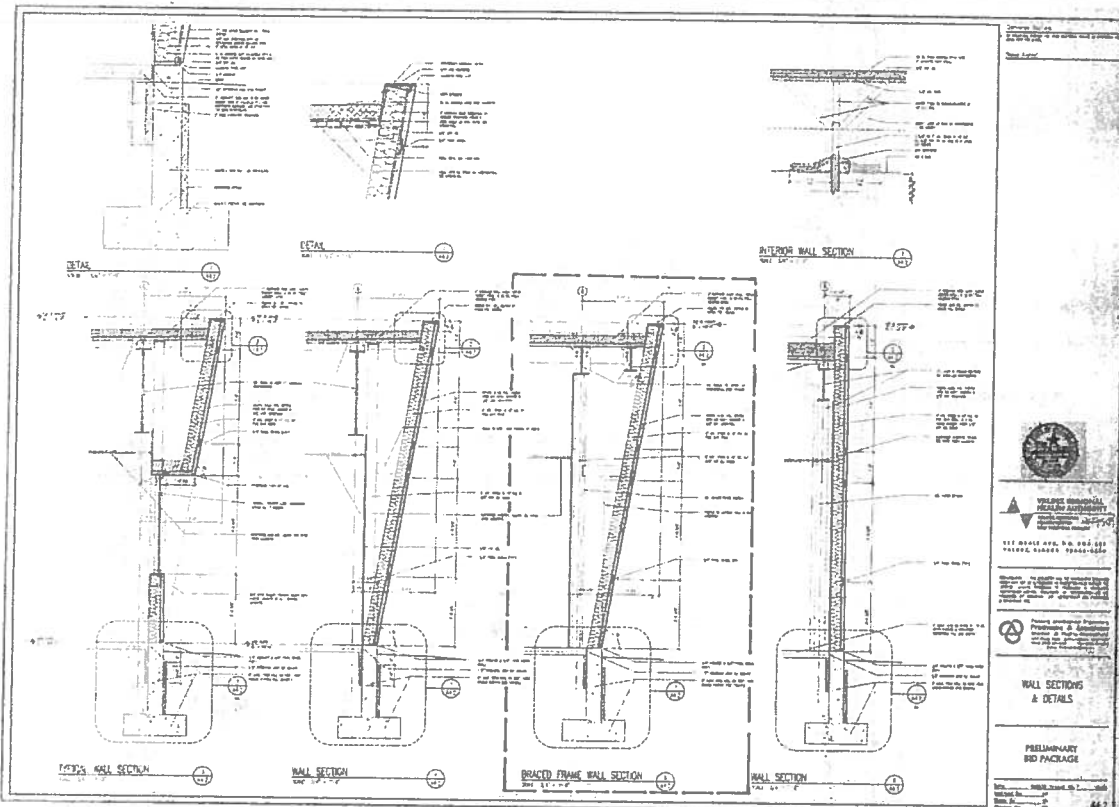
PRELIMINARY BID PACKAGE

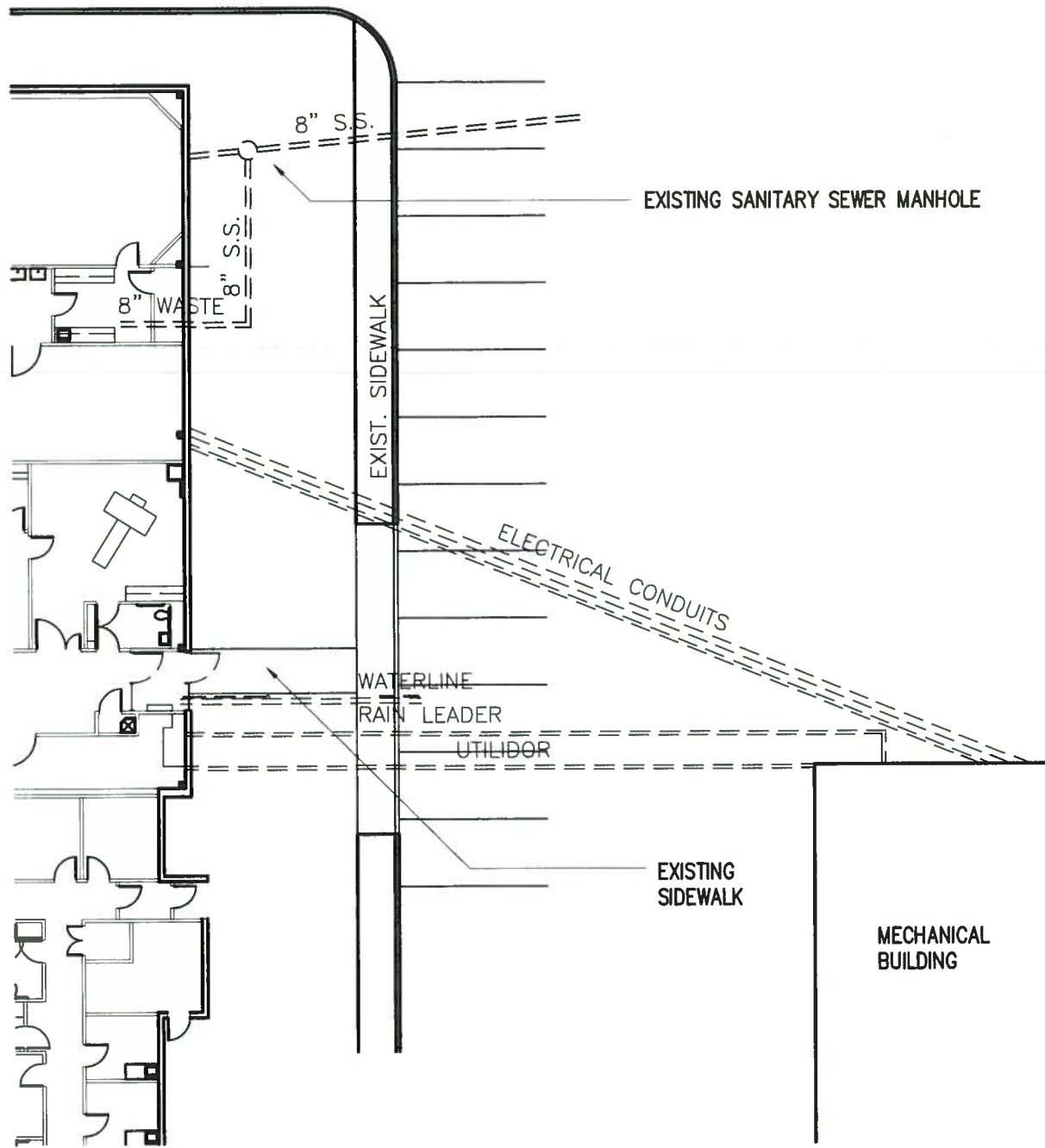
DATE: 10/1/00

SCALE: AS SHOWN

AL 5







Drawing File:



Architects Alaska, Inc.
architectsalaska.com

900 W. 5th Ave. Suite 403
Anchorage, Alaska 99501-2029
907.272.3567 • 907.277.1732 fax

Project Name:
VMC MODULAR MRI – RFP

Sheet Contents:
EXISTING PARTIAL SITE PLAN

Reference sheet: -

Date:
8/12/2013

Job. No:
13007.01

Drawing Number:

A1